

MPA 23/11 - MPA 41/31

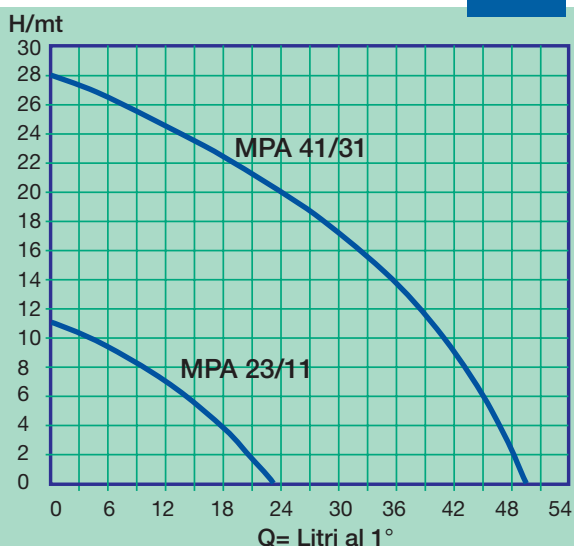
M A G N E T I C D R I V E P U M P S

DIRECTIVES:

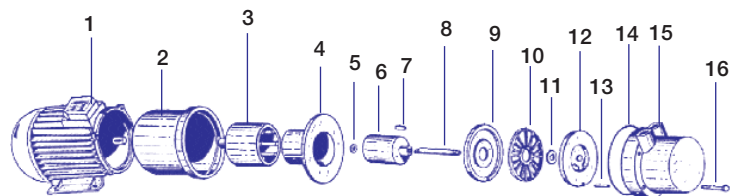
- The pump should never run dry.
- Dirty liquids and crystals reduce the life of the bearings.
- The ambient temperature should be between 0 and 40 °C.
- Flame proof motors should be used in explosive atmospheres.
- The liquid should not crystallize in the pump.
- The maximum temperature of the pumped liquid should be: 70 °C (for PP) 95 °C (for PVDF)
- The pump is self priming.

MPA 23/11 - MPA 41/31

50Hz



EXPLODED VIEW MAGNETIC DRIVE PUMP



- | | | |
|----------------|-------------------|-------------------|
| 1 Motor | 6 Impeller magnet | 12 Counter flange |
| 2 Flange | 7 key | 13 Key |
| 3 Drive magnet | 8 Shaft | 14 O-ring |
| 4 Rear casing | 9 Flange | 15 Front casing |
| 5 Thrust ring | 10 Impeller | 16 Screw |
| | 11 Thrust ring | |

Curve references:
water at ambient temperature