

MPC 042 - MPP 031

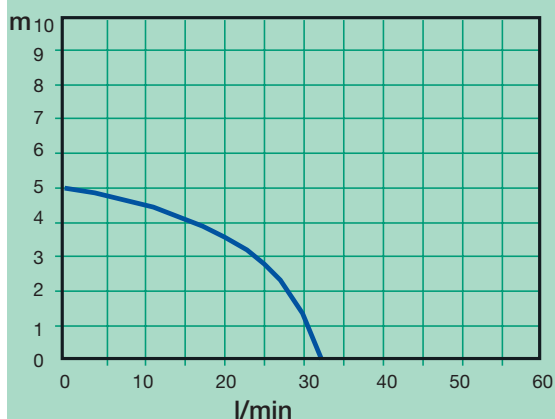
M A G N E T I C D R I V E P U M P S

DIRECTIVES:

- The pump should never run dry.
- Dirty liquids and crystals reduce the life of the bearings.
- The ambient temperature should be between 0 and 40 °C.
- Flame proof motors should be used in explosive atmospheres.
- The liquid should not crystallize in the pump.
- The maximum temperature of the pumped liquid should be: 70 °C (for PP) 95 °C (for PVDF)
- The pump is normal priming.

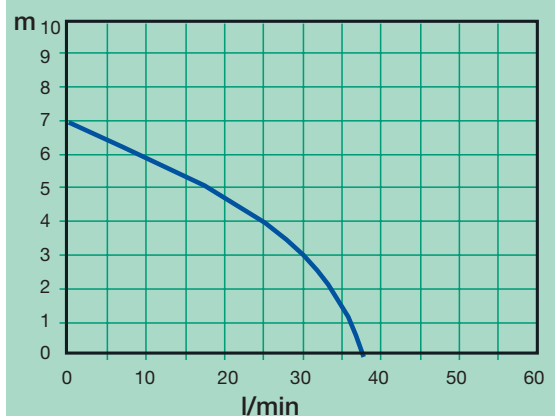
MPC 042 - MPP 031

50Hz



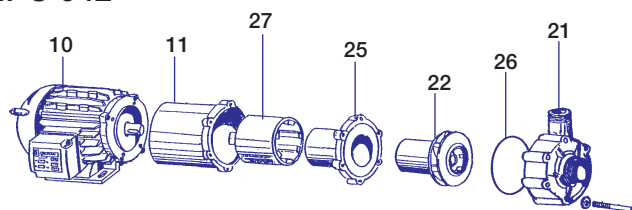
MPC 042 - MPP 031

60Hz



EXPLODED VIEW MAGNETIC DRIVE PUMP

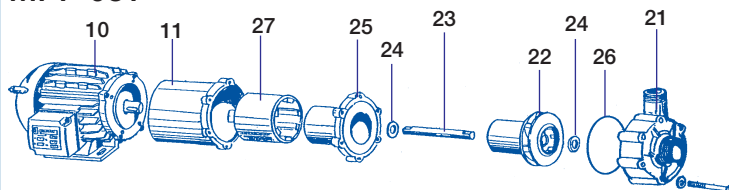
MPC 042



- | | |
|-----------------|----------------|
| 10 Motor | 22 Impeller |
| 11 Flange | 26 O-ring |
| 27 Drive magnet | 21 Pump casing |
| 25 Rear casing | |

Wet-end:
21+22+25+26 = 30

MPP 031



- | | |
|-----------------|----------------|
| 10 Motor | 23 Shaft |
| 11 Flange | 22 Impeller |
| 27 Drive magnet | 26 O-ring |
| 25 Rear casing | 21 Pump casing |
| 24 Thrust | |

Wet-end:
21+22+23+24+25+26 = 30

Curve references:
water at ambient temperature