

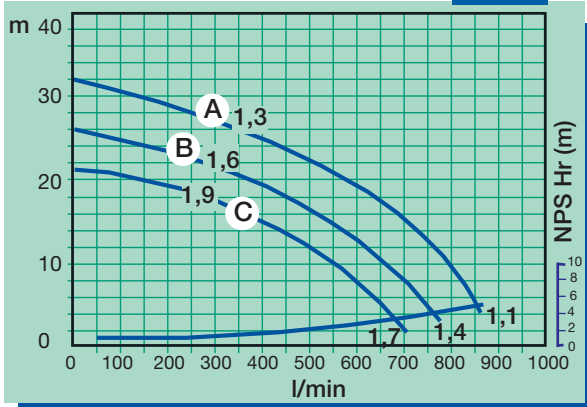


# MPP 831 - MPP 951

## M A G N E T I C   D R I V E   P U M P S

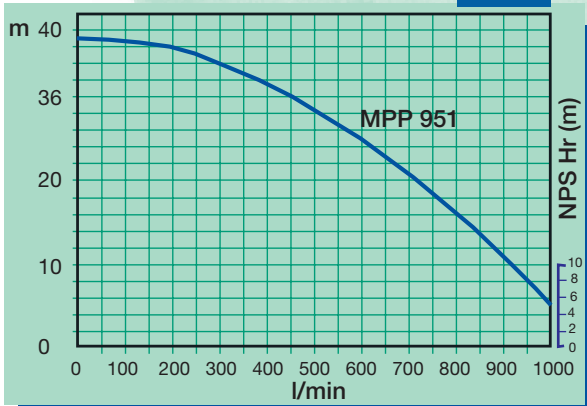
MPP 831

50Hz



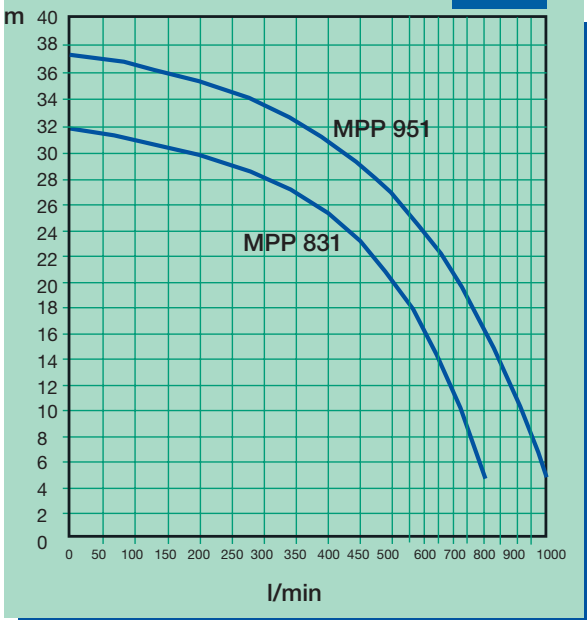
MPP 951

50Hz



MPP 831 - MPP 951

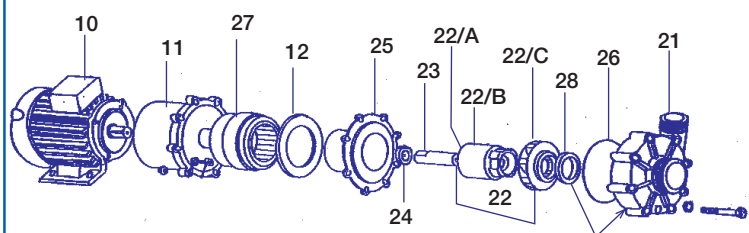
60Hz



### DIRECTIVES:

- The pump should never run dry.
- Dirty liquids and crystals reduce the life of the bearings.
- The ambient temperature should be between 0 and 40 °C.
- Flame proof motors should be used in explosive atmospheres.
- The liquid should not crystallize in the pump.
- The maximum temperature of the pumped liquid should be: 70 °C (for PP) 95 °C (for PVDF)
- The pump is normal priming.

### EXPLODED VIEW MAGNETIC DRIVE PUMP



- |                  |                                   |
|------------------|-----------------------------------|
| 10 Motor         | 22 Impeller assembly              |
| 11 Flange        | 22/A Impeller bush                |
| 27 Drive magnet  | 22/B Impeller Magnet              |
| 12 Centring Ring | 22/C Impeller                     |
| 25 Rear casing   | 28 Bushing guide with thrust ring |
| 24 Thrust ring   | 26 O. R.                          |
| 23 Shaft         | 21 Pump casing                    |

Wet end :  
21+22+23+24+25  
+26+28 = 30

Curve references:  
water at ambient temperature

P.le Cocchi, 6 - 21040 Veduggio (VA) Italy - Tel. +39 0332 402168 Fax +39 0332 402169  
e-mail: info@lafonte.eu - www.lafonte.eu

It is the policy of La fonte always to improve its products, we reserve the right to alter specifications at any time without prior notice