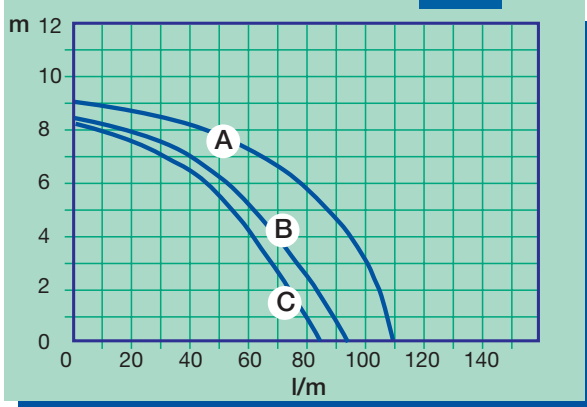


MPP 101 - MPP 201

M A G N E T I C D R I V E P U M P S

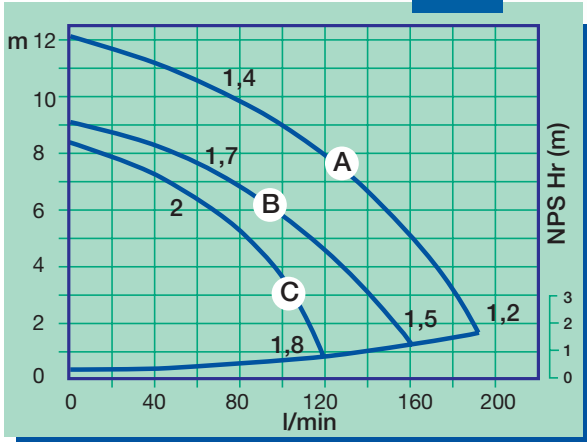
MPP 101

50Hz



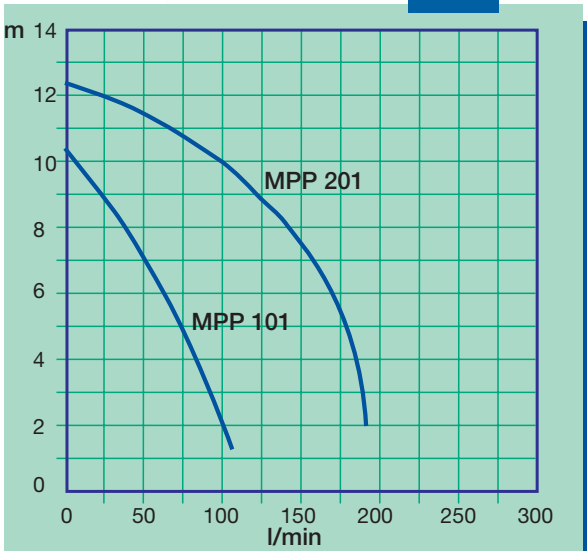
MPP 201

50Hz



MPP 101 - 201

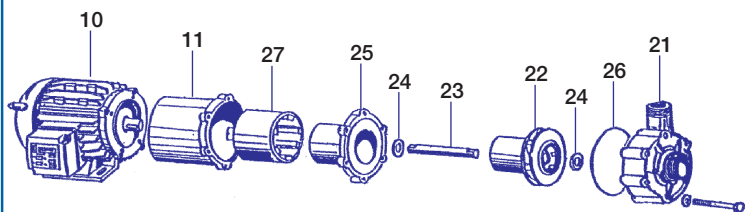
60Hz



DIRECTIVES:

- The pump should never run dry.
- Dirty liquids and crystals reduce the life of the bearings.
- The ambient temperature should be between 0 and 40 °C.
- Flame proof motors should be used in explosive atmospheres.
- The liquid should not crystallize in the pump.
- The maximum temperature of the pumped liquid should be: 70 °C (for PP) 95 °C (for PVDF)
- The pump is normal priming.

EXPLODED VIEW MAGNETIC DRIVE PUMP



- | | |
|-----------------|----------------|
| 10 Motor | 23 Shaft |
| 11 Flange | 22 Impeller |
| 27 Drive magnet | 24 Thrust ring |
| 25 Rear casing | 26 O-ring |
| 24 Thrust ring | 21 Pump casing |

Wet-end:
21+22+23+24+25+26 = 30

Curve references:
water at ambient temperature

P.le Cocchi, 6 - 21040 Veduggio (VA) Italy - Tel. +39 0332 402168 Fax +39 0332 402169
e-mail: info@lafonte.eu - www.lafonte.eu

It is the policy of La fonte always to improve its products, we reserve the right to alter specifications at any time without prior notice